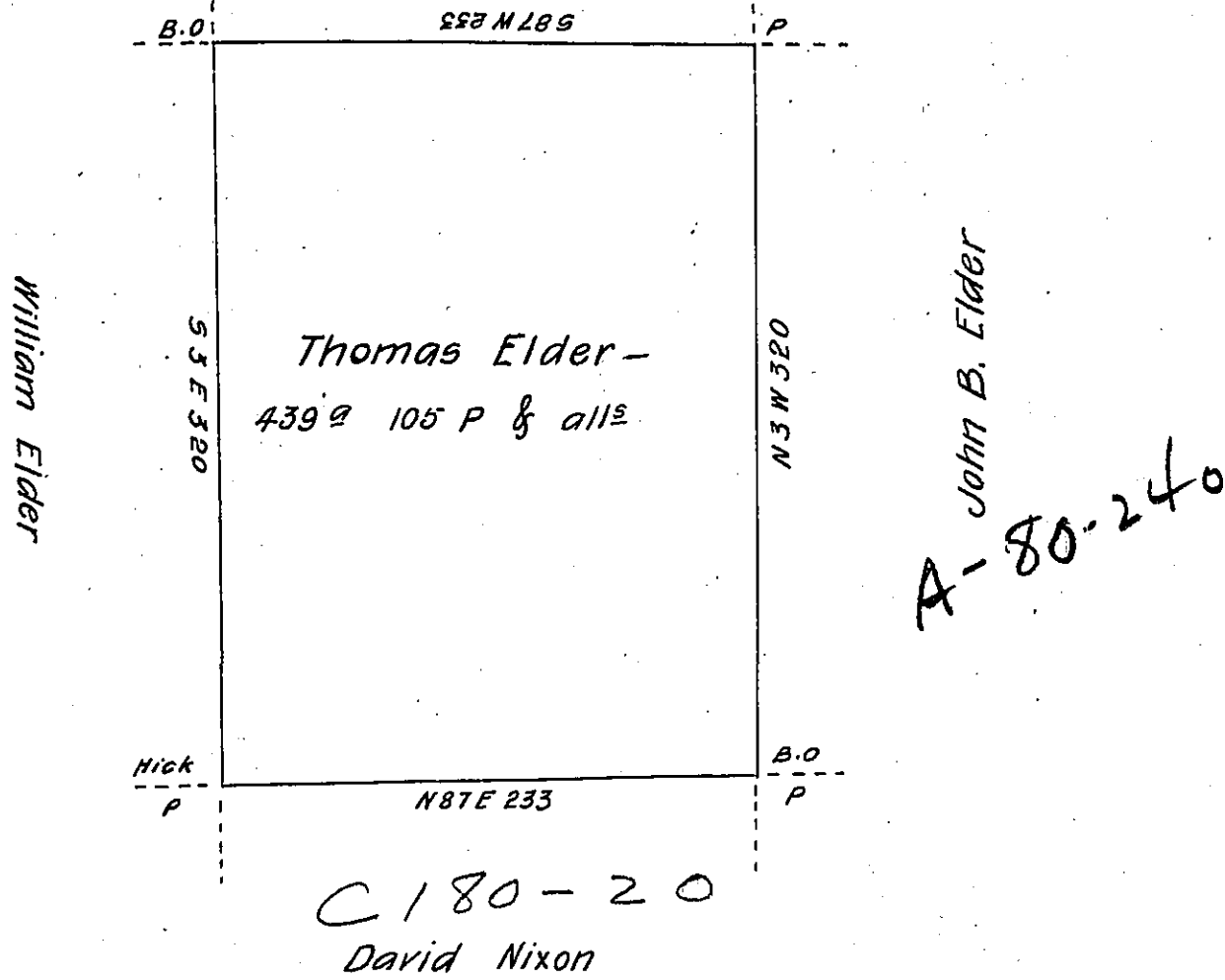


Samuel Miller  
C-140-193



A draught of a tract of Land Situate on the Waters of Sugar Creek in  
 Butler and Armstrong Countys. Containing four hundred thirty nine  
 Acres 105 P and allowance of six P. Cent for Roads &c. Surveyed on the  
 19<sup>th</sup> day of November 1808 by Virtue of a Warrant granted to Thomas Elder Jr  
 dated February 3<sup>d</sup> 1794 for 400 acres.

Ja<sup>s</sup> Irvine D. S.

Samuel Cochran Esq<sup>r</sup> S.G.

IN TESTIMONY that the above is a copy of the original remaining on file in  
 the Department of Internal Affairs of Pennsylvania, made  
 conformably to an Act of Assembly approved the 16th day of  
 February, 1833, I have hereunto set my Hand and caused  
 the Seal of said Department to be affixed at Harrisburg,  
 this.....fifteenth.....day of.....September.....1904.

*Loose P. Brown*  
 Secretary of Internal Affairs.